



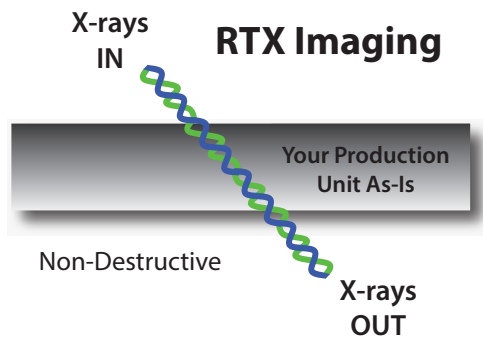
'RTX Imaging'

Non-Destructive
Imaging Tool

**Analytical Services
On Demand**

NanoLab Delivers!

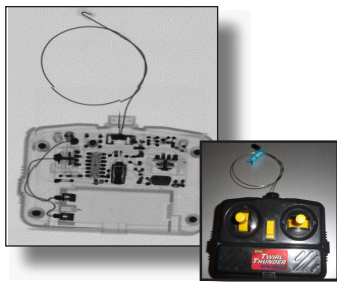
NanoLab's State-Of-The-Art 'RTX Imager'



'RTX' in a Nano-Nutshell

- X-rays IN - X-rays OUT
- Non-Destructive Imaging
- Planar & Angled Views
- Spatial Resolution: 0.2 μ
- Sample Thickness: 50 mm
- Any Shape in XYZ
- Sample Size: 300 x 300 mm
- Real-Time X-ray (RTX) Imaging

X-ray Image Of Remote Control Device



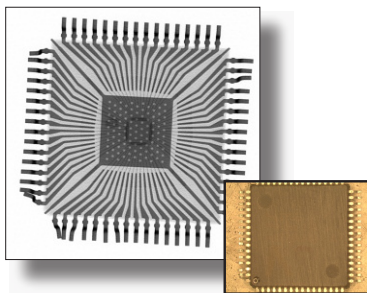
STRENGTHS / ADVANTAGES

- Fast (<5 minutes)
- Non-destructive
- Spatial resolution: 0.2 μ
- Locate defects inside unit
- Check layout as-is
- Multiple angle viewing

GLOBAL USES

- Prototype evaluation
- Customer returns
- Reliability rejects
- Production control
- Materials development
- Quality control
- Problem solving
- Failure analysis
- Reverse engineering

X-ray Image Of PQFP Device



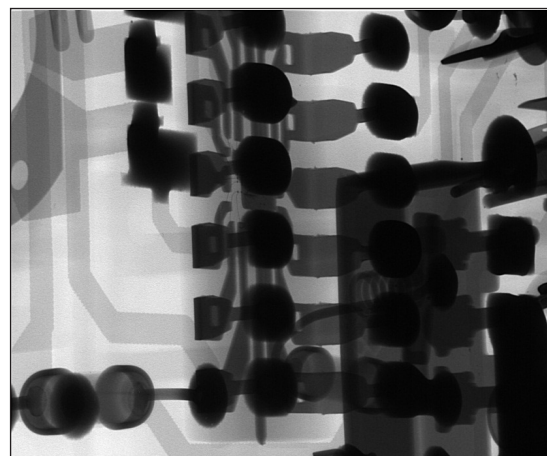
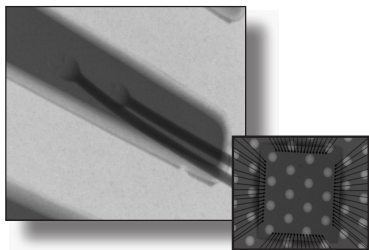
DATA PRODUCED

- X-ray images
- Gray scale density map of X-rays
- Dimensional sizing
- Need special data - give us a call.

APPLICATIONS

- Internal dimensioning
- Good versus bad
- A versus B
- Locating opens
- Locating shorts
- Many more - let's talk.

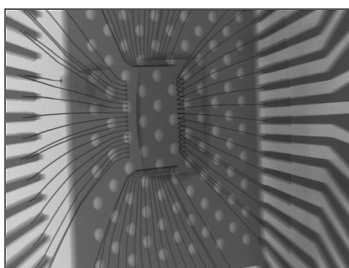
High Resolution Zooming (inspect bonding)



FOLLOW-UP CAPABILITIES

- Curve tracing
- Physical cross-sectioning
- SEM-EDX
- Parallel lapping
- C-SAM
- FIB-SEM
- Specialty spectra - call us.

Angled View (of above device)



SAMPLE TREATMENTS

- As-received
- Compare to Golden Unit
- Advanced treatments - let us help with your special needs.

NanoLab Technologies, 1708 McCarthy Blvd, Milpitas,
California 95035 USA **Website:** www.nanolab1.com
E-mail: sales@nanolab1.com, **Sales Tel:** 1.408.433.3320

Setup "Golden Units",
arrange Work Request, or
Work On-Site with us.
E-mail: FA-info@nanolab1.com